



<http://www.biodiversitylibrary.org>

Herpetology of Porto Rico / Leonhard Stejneger.

Washington:U.S. Government Printing Office,1904.

<http://www.biodiversitylibrary.org/bibliography/11835>

Item: <http://www.biodiversitylibrary.org/item/44421>

Page(s): Title Page, Page 683, Page 684, Page 685, Page 686, Page 687

Contributed by: Smithsonian Institution Libraries

Sponsored by: Smithsonian

Generated 22 June 2010 2:25 PM

<http://www.biodiversitylibrary.org/pdf2/003435800044421>

This page intentionally left blank.

THE HERPETOLOGY OF PORTO RICO.

BY

LEONHARD STEJNEGER,

Curator, Division of Reptiles and Batrachians.

List of specimens of *Amphisbæna bakeri* examined.

U.S. N.M. No.	Locality.	When collected.	By whom collected.	Number of rings on body.	Rings on tail.	Dorsal segments.	Ventral segments.	Postgenitals.	Anal.	Preanal pores.
25537	Lares	Jan. 26, 1899	A. B. Baker	251	16	16	16	3	6	4
25541 ^a	do	do	do	249	16	16	16	3	6	4
27458	Porto Rico	— —, 1900	Chas. E. Adams....	250	17	16	18	3	6	4

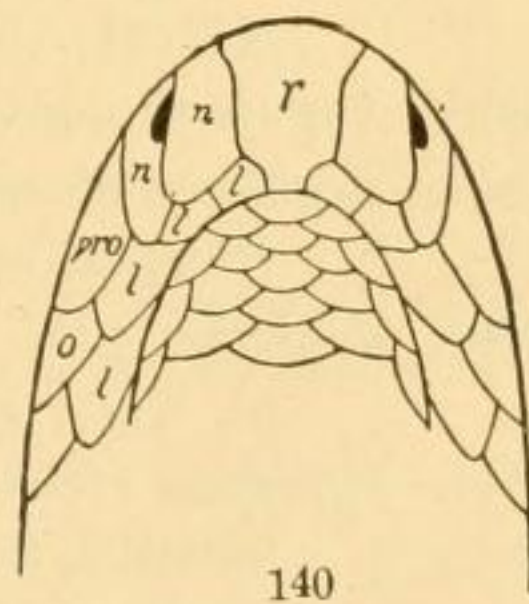
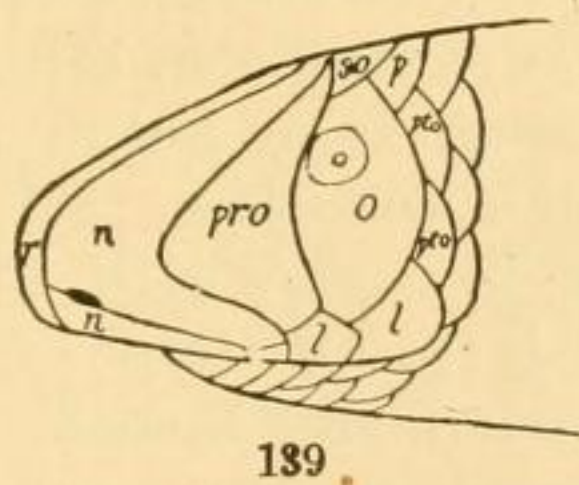
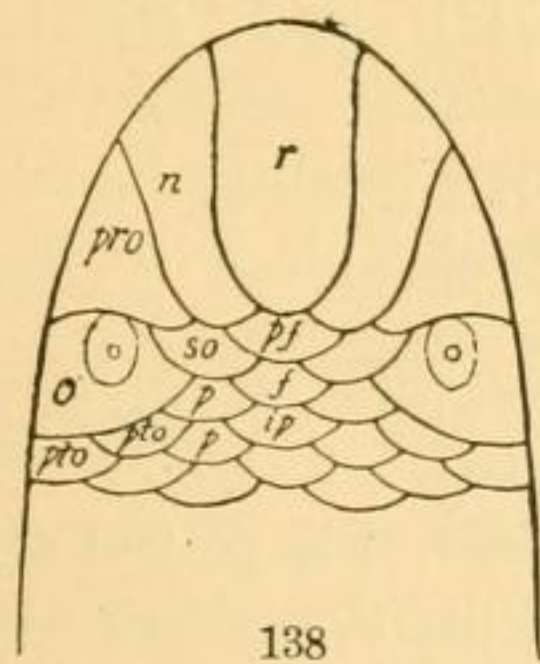
^aTyp .

Suborder SERPENTES.

The snakes are but poorly represented in Porto Rico, both as to species and, at present at least, as to individuals. None of the poisonous forms, whether Crotalidæ or Elapidæ, are found, not even one of the “suspects” or opistoglyphs. The four genera which occur belong to no less than three families. They may be told apart by the following artificial

KEY TO THE PORTO RICAN SNAKES.

- a*¹ Underside of body covered with small scales like the back (*Typhlopidae*)
..... *Typhlops*, p. 683.
- a*² Underside of body covered with transverse plates.
 - b*¹ Plates on underside of tail undivided (*Boidæ*) *Epicrates*, p. 688.
 - b*² Plates on underside of tail in pairs (*Coronellidæ*).
 - c*¹ Scales on back with one pore near the tip or none.... *Leimadophis*, p. 694.
 - c*² Scales on back with two pores *Alsophis*, p. 699.



FIGS. 138-140.—HEAD SHIELDS OF TYPHLOPS. *f*, frontal; *ip*, interparietal; *l*, supralabials; *n*, nasal; *o*, ocular; *p*, parietals; *pf*, prefrontal; *pro*, preocular; *pto*, postocular; *r*, rostral; *so*, supraocular.

Genus TYPHLOPS^a Oppel.

- 1811. *Typhlops* OPPEL, Ordn. Rept., p. 54 (type *T. lumbricalis*).
- 1844. *Ophthalmidion* DUMÉRIL and BIBRON, Erpét. Gén., VI, p. 262 (type *O. longissimum*).
- 1845. *Anilius* GRAY, Cat. Liz. Brit. Mus., p. 135 (type *A. australis*; not *Anilius* OKEN, 1816).
- 1845. *Meditoria* GRAY, Cat. Liz. Brit. Mus., p. 139 (type *T. nasutus*).

^a τῦφλός, blind; ὤψ, eye.

The blind-snakes are small burrowing snakes, smooth and nearly cylindrical, and covered with rounded imbricate scales of nearly uniform size and shape both above and below; only a few shields covering the anterior portion of the head are clearly differentiated from the rest. The eye is concealed under a large shield and may be shining through as a blackish spot or be entirely invisible. They have teeth only in the upper jaw, and there is no enlarged preanal shield.

At the first glance they resemble earthworms, and like these animals they live underground in self-made burrows.

Two species of blind-snakes occur in Porto Rico, one of which is here described as new. They may be distinguished as follows:

- a*¹ Rostral moderate, one-third to one-fourth the width of the head; brown above, whitish below; twenty to twenty-two scale rows..... *T. lumbricalis*, p. 684
*a*² Rostral very narrow, one-fifth to one-sixth the width of the head; uniform brown above and below with an abrupt whitish spot on the underside of the snout and another on the underside of the tail; eighteen to twenty scale rows.....
T. rostellatus, p. 686

TYPHLOPS LUMBRICALIS ^a (Linnæus).

1758. *Anguis lumbricalis* LINNÆUS, Syst. Nat., 10th ed., I, p. 228 (type locality, America).—*Typhlops l.* OPPEL, Ordn. Rept., 1811, p. 55.—DUMÉRIL and BIBRON, Erpét. Gén., VI, 1844, p. 287 (Martinique, Guadeloupe, Cuba).—JAN, Icon. Ophid., livr. 3, 1864, pls. IV, V, fig. 4.—PETERS, Mon. Ber. Berlin Akad. Wiss., 1876, p. 708 (Porto Rico).—GUNDLACH, Anal. Soc. Españ. Hist. Nat., X, 1881, p. 312 (Porto Rico).—STAHL, Fauna Puerto-Rico, 1882, pp. 70, 160 (Puerto Rico).—BOULENGER, Cat. Sn. Brit. Mus., I, 1893, p. 31 (Jamaica, Cuba, St. Thomas, Antigua), III, 1896, p. 585.—VERRILL, Trans. Connecticut Acad. Sci., VIII, April, 1892, p. 351; author's separate p. 37 (Dominica) (or may be *platycephalus*??).—MEERWARTH, Mitth. Naturh. Mus. Hamburg, XVIII, 1901, p. 5 (St. Thomas, Haiti, Mona Island).
1802. *Anguis jamaicensis* SHAW, Gen. Zool., III, p. 588 (type locality, Jamaica).
1830. *Typhlops cinereus* GUÉRIN, Icon. Règne Anim., Rept., pl. XVIII, fig. 2 (Guadeloupe) (not of Schneider, 1801).
1840. *Typhlops cubæ* BIBRON, in Sagra's Hist. Fis. Pol. Nat., IV, Rept., p. 122, pl. XXII; French ed. (p. 204) (type locality, Cuba).
1844. *Typhlops richardii* DUMÉRIL and BIBRON, Erpét. Gén., VI, p. 290 (type locality, St. Thomas).—DUMÉRIL, Cat. Méth. Rept. Mus. Paris, 1851, p. 205 (St. Thomas, Cuba, Porto Rico).—REINHARDT and LUETKEN, Vid. Meddel. Naturh. Foren. (Copenhagen), 1862 (1863), p. 164; author's separate p. 12 (Virgin Islands).—JAN, Icon. Ophid., livr. 3, 1864, pls. IV, V, fig. 7.—GARMAN, Proc. Amer. Philos. Soc., XXIV, 1887, p. 278 (St. Kitts).

Description.—*Adult*; U.S.N.M. No. 27489; Aguadilla; July 28, 1900. Head rather depressed, snout strongly projecting, rounded laterally; nostrils slightly below the lateral horizontal edge; rostral about two-sevenths the width of the head (1:3.5), extending backward to a line drawn between the anterior edge of the eyes; nostril on a

^a Resembling an earthworm, lumbricus.

suture starting from the middle of the upper edge of the second supralabial and joining the rostral suture at the lateral horizontal edge, the lower anterior nasal thus being in contact with first and second supralabial and the upper posterior one in contact with the second and third; preocular large, as wide as the ocular, in contact with third labial; ocular with but slightly convex anterior edge, in contact with third and fourth supralabials; supraoculars, prefrontal, frontal, postoculars, and parietals scale like, subequal; eye distinctly visible; 20 scale rows round the body; about 360 scales on the middle line of the body underneath from chin to vent and 11 under the tail; tail ending in a spine. Color above brown, each scale being dark brown on the terminal two-thirds, the base being abruptly pale; on the smaller head scales this color pattern does not exactly correspond to the individual scales, and the large head shields are brown, with pale edges; underside whitish, the dividing line between the color of the upper and lower surfaces being very irregular, with an angular projection of the white color into the brown on the side at the level of the vent.

Dimensions.

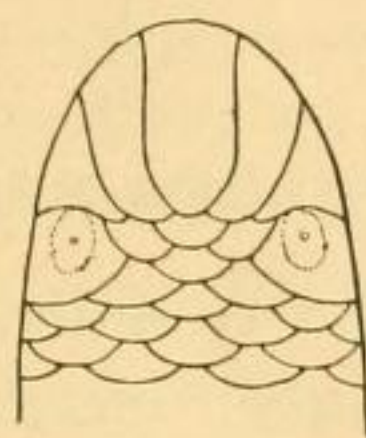
	<i>mm.</i>
Tip of snout to vent.....	278
Vent to tip of tail.....	6
Diameter of body.....	9

Variation.—The individual variation in scutellation and color is but slight. The number of scale rows in six specimens from Porto Rico and Mona is 20; in 2 (U.S.N.M. Nos. 29198 and 30908) it is 22. The

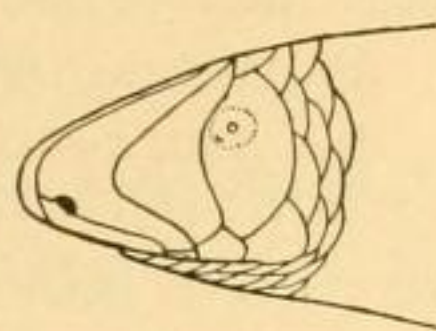
color of one of the specimens from Mona Island in the Hamburg Museum (No. 1582), examined by me in August, 1901, was nearly uniform whitish, having the appearance of an albino.

Habitat.—The true *Typhlops lumbricalis* extends from South America into nearly all the Antillean islands. Thus, it is recorded from Martinique, Guadeloupe, Dominica, St. Kitts, Antigua, the Virgin Islands, Porto Rico, Mona, Haiti, Cuba, and Jamaica.

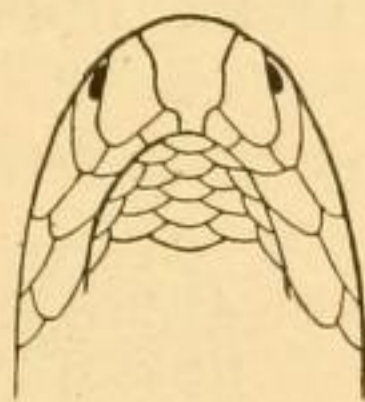
In Porto Rico it has thus far been found only in the low land, not far above sea level. There are two specimens in the Hamburg Museum from Mona Island, collected by Mr. Bock in 1891 and 1894,



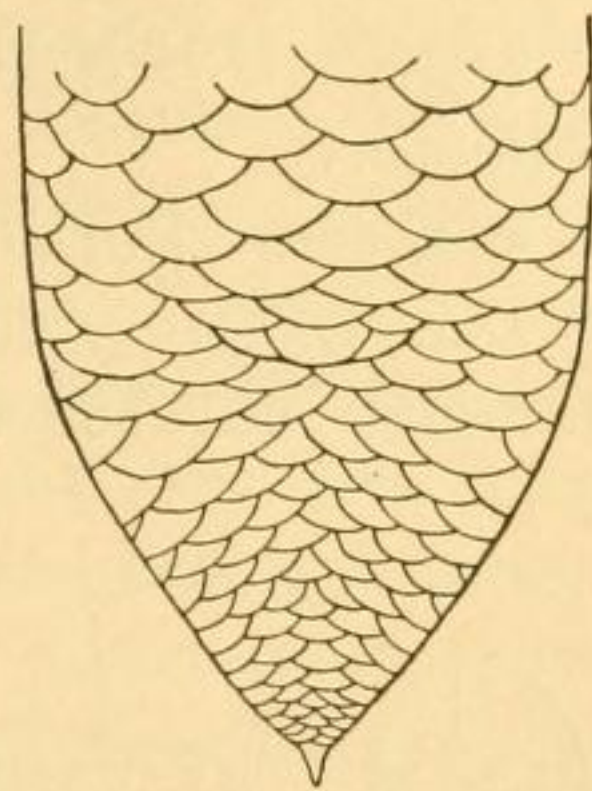
141



142



143



144

FIGS. 141-144.—*TYPHLOPS LUMBRICALIS*.
 $3\frac{1}{2} \times$ natural size. 141, top of head; 142,
 side of head; 143, underside of head; 144,
 anal region and underside of tail.
 No. 27489, U.S.N.M.

List of specimens of Typhlops lumbricalis.

U.S. N.M. No.	Sex and age.	Locality.	When collected.	By whom collected.	Scale.	Remarks.
25779	Bayamon, Porto Rico.	Jan. 15, 1899	A. B. Baker.....	20	
27324	do	A. Stahl.....	20	
27489	Aguadilla, Porto Rico.	July 28, 1900	B. S. Bowdish.....	20	Specimen figs. 141-144, and described, p. 684.
29198	Mayaguez, Porto Rico.	— —, 1901do.....	22	
29364	do	Sept. 16, 1901do.....	20	
30908	Young..	Bayamon, Porto Rico.	Jan. 14, 1899	Augustus Busck....	22	

TYPHLOPS ROSTELLATUS,^a new species.

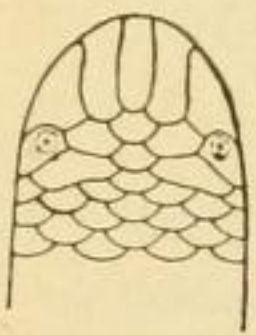
Diagnosis.—Snout rounded; nostrils lateral; preocular in contact with third labial only; nasal completely divided in two; two postoculars; rostral very narrow, one-fifth to one-sixth the width of the head; 18–20 scale rows.

Type.—U.S.N.M. No. 25463; Lares, Porto Rico; A. B. Baker, collector.

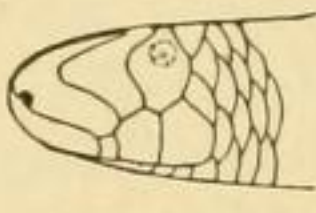
Habitat.—Porto Rico, West Indies.

Description of type specimen.—*Adult*; U.S.N.M. No. 25463; Lares; January 26, 1899. Head blunt, not depressed, snout projecting,

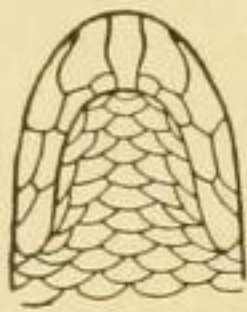
rounded laterally; nostrils lateral; rostral narrow, about one-sixth the width of the head (1:6.4), not extending as far back as a line between the anterior edge of the eyes; nostril on a suture completely dividing the nasal, the lower anterior part in contact with first and second, the upper posterior nasal in contact with second and third; pre-



145



146



147

FIGS. 145–147.—TYPHLOPS ROSTELLATUS. $3\frac{1}{2}$ × natural size. 145, top of head; 146, side of head; 147, underside of head.

ocular wider than ocular, its anterior angle much produced and rather acute, in contact with third supralabial only; ocular with the anterior border strongly convex, in contact with third and fourth supralabials; supralabials four, the posterior two large and reaching high up on the side; prefrontal, frontal, and interparietal scale-like, subequal; supraoculars and parietals enlarged, especially the latter; eye distinctly visible; 18 scale rows round the body; about 333 scales on the middle line of the body underneath from chin to vent, and 13 under tail; tail ending in a spine. Color uniform dark brown, slightly paler underneath; through the dark ground color a distinct blackish network can

^a With reference to the narrowness of the rostral shield.

be traced, the meshes of which anteriorly coincide with the outline of the scales, but becoming more and more discordant posteriorly; rostral and anterior nasal brown above, margined with whitish, underneath whitish; a very abrupt whitish spot occupying the anal region and the under side of the tail.

Dimensions.

	<i>mm.</i>
Tip of snout to vent	197
Vent to tip of tail	3
Diameter of body	5

Variation.—The individual variation appears to be similar in character and extent to that indicated for *Typhlops lumbricalis*. Three of our specimens have 18 scale rows, the fourth has 20.

Habitat.—Thus far the only definite locality whence we have received this species is Lares, in the western part of Porto Rico. In this place Mr. A. B. Baker obtained three specimens. A fourth was sent from Porto Rico by Mr. Charles E. Adams, but without indication of the exact locality where he collected it.

Remarks.—This interesting novelty resembles in color closely the specimens which Boulenger has described from Dominica under the name of *Typhlops platycephalus*. The latter differ, however, by having 24 scale rows around the body and by a much wider rostral which is said to be one-third the width of the head. Duméril and Bibron's *Typhlops platycephalus*, which is said to have come from Martinique, collected by Plée, must be a very different one from the Dominica species. It is described as having 20 scale rows and it might consequently be suspected to be the same as our Porto Rican species, but apart from the radically different coloration, the true *T. platycephalus* is described as having the head more depressed than *T. lumbricalis* and the posterior supralabials much lower, while, as we have seen, two of the best characters of our new *T. rostellatus* are the lack of depression in the profile of the head and the unusual height of the posterior supralabials.

Boulenger's *T. platycephalus*^a is apparently different from that of Duméril and Bibron and may be appropriately named *Typhlops dominicana*, from the island of Dominica, of which it is a native.

List of specimens of Typhlops rostellatus.

U.S. N.M. No.	Sex and age.	Locality.	When collected.	By whom collected.	Scale rows.	Remarks.
25463	Lares, Porto Rico...	Jan. 26, 1899	A. B. Baker.....	18	Type.
25462	do	do	do.....	20	
25461	do	do	do.....	18	
27460	Porto Rico.....	— —, 1900	Chas. E. Adams	18	

^a Cat. Sn. Brit. Mus., I, 1893, p. 30.

The following text is generated from uncorrected OCR.

[Begin Page: Title Page]

THE HERPETOLOGY OF PORTO RICO.

BY

LEONHAED STEJNEGER,

Curator, Division of Reptiles and Batrachians.

549

[Begin Page: Page 683]

HERPETOLOOY OF PORTO RICO.

683

List of specimens of *Amphisbena bdkeri* examined.

«Typ .

Suborder SERPENTES.

The snakes are but poorly represented in Porto Rico, both as to species and, at present at least, as to individuals. None of the poison-

ous forms, whether Crotalidae or Elapidae, are found, not even one of the "suspects" or opisthophis. The four genera which occur belong to no less than three families. They may be told apart by the follow-

ing artificial

KEY TO THE PORTO RICAN SNAKES.

a 1 Underside of body covered with small scales like the back (Typhlops)

Typhlops, p. 683.

a 2 Underside of body covered with transverse plates.

6 1 Plates on underside of tail undivided (Boidae) Epicrates, p. 688.

b a Plates on underside of tail in pairs (Coronellidae).

c 1 Scales on back with one pore near the tip or none Leimadophis, p. 694.

c 2 Scales on back with two pores Alsophis, p. 699.

Figs. 138-140. — Head shields of Typhlops. /, frontal; ip, interparietal; l, supralabials; n, nasal; o, ocular; p, parietals; pj, prefrontal; pro, preocular; pto, postocular; r, rostral; so, supraocular.

Genus TYPHLOPS" Opper.

1811. Typhlops Opper, Ordn. Rept., p. 54 (type T. lumbricalis) .

1844. *Ophthalmidion* Dumeril and Bibron, *Erpet. Gen.*, VI, p. 262 (type *O. longisimuni*).

1845. *Anilius* Gray, *Cat. Liz. Brit. Mus.*, p. 135 (type *A. australis*; not *Anilius* Oken, 1816).

1845. *Mediloria* Gray, *Cat. Liz. Brit. Mus.*, p. 139 (type *T. nasulus*).

arvcpxos, blind; chti>, eve.

[Begin Page: Page 684]

684 REPORT OF NATIONAL MUSEUM, 1902.

The blind-snakes are small burrowing snakes, smooth and nearly cylindrical, and covered with rounded imbricate scales of nearly uniform size and shape both above and below; only a few shields covering the anterior portion of the head are clearly differentiated from the rest.

The eye is concealed under a large shield and may be shining through as a blackish spot or be entirely invisible. They have teeth only in the upper jaw, and there is no enlarged preanal shield.

At the first glance they resemble earthworms, and like these animals they live underground in self-made burrows.

Two species of blind-snakes occur in Porto Rico, one of which is

here described as new. They may be distinguished as follows:

a' 1 Rostral moderate, one-third to one-fourth the width of the head; brown above, whitish below; twenty to twenty-two scale rows T. lumbricalis, p. 684

a' 2 Rostral very narrow, one-fifth to one-sixth the width of the head; uniform brown above and below with an abrupt whitish spot on the underside of the snout

and another on the underside of the tail; eighteen to twenty scale rows

T. rostellatus, p. 686

TYPHLOPS LUMBRICALIS* (Linnaeus).

1758. *Anguis lumbricalis* Linnaeus, *Syst. Nat.*, 10th ed., I, p. 228 (type locality, America). — *Typhlops* I. Oppel, *Ordn. Rept.*, 1811, p. 55. — Dumeril and Bibron, *Erpet. Gen.*, VI, 1844, p. 287 (Martinique, Guadeloupe, Cuba). — Jan, *Icon. Ophid.*, livr. 3, 1864, pis. iv, v, fig. 4. — Peters, *Mon. Ber. Berlin Akad. Wiss.*, 1876, p. 708 (Porto Rico).— Gundlach, *Anal. Soc. Espah. Hist. Nat.*, X, 1881, p. 312 (Porto Rico).— Stahl, *Fauna Puerto-Rico*, 1882, pp. 70, 160 (Puerto Rico). — Boulenger, *Cat. Sn. Brit. Mus.*, I, 1893, p. 31 (Jamaica, Cuba, St. Thomas, Antigua), III, 1896, p. 585. — Verrill, *Trans. Connecticut Acad. Sci.*, VIII, April, 1892, p. 351; author's separate p. 37 (Dominica) (or may be platycephalitsf?). — Meerwarth, *Mitth. Naturh. Mus. Hamburg*, XVIII, 1901, p. 5 (St. Thomas, Haiti, Mona Island).

1802. *Anguis jamaicensis* Shaw, *Gen. Zool.*, III, p. 588 (type locality, Jamaica).

1830. *Typhlops cinereus* Guerin, Icon. Regne Anim., Rept., pi. xviii, fig. 2
(Guadeloupe) (not of Schneider, 1801).

1840. *Typhlops ctibx* Bibron, in Sagra's Hist. Fis. Pol. Nat., IV, Rept., p. 122,
pi. xxn ; French ed. (p. 204) (type locality, Cuba).

1844. *Typhlops richardii* Dumeril and Bibron, Erpet. Gen., VI, p. 290 (type
locality, St. Thomas).— Dumeril, Cat. Meth. Rept, Mus. Paris, 1851,
p. 205 (St. Thomas, Cuba, Porto Rico). — Reinhardt and Luetken, Vid.
Meddel. Naturh. Foren. (Copenhagen), 1862 (1863), p. 164; author's
separate p. 12 (Virgin Islands). — Jan, Icon. Ophid., livr. 3, 1864, pis.
iv, v, fig. 7.— Garman, Proc. Amer. Philos. Soc, XXIV, 1887, p. 278
(St. Kitts).

Dew'vption.— Adult; U.S.N.M. No. 27489; Aguadilla; July 28,

1900. Head rather depressed, snout strongly projecting, rounded
laterally; nostrils slightly below the lateral horizontal edge; rostral
about two-sevenths the width of the head (1:3.5), extending backward
to a line drawn between the anterior edge of the eyes; nostril on a

a Resembling an earthworm, lumbricus.

[Begin Page: Page 685]

HERPETOLOGY OF PORTO RICO.

suture starting- from the middle of the upper edge of the second supra-labial and joining the rostral suture at the lateral horizontal edge, the lower anterior nasal thus being in contact with first and second supra-labial and the upper posterior one in contact with the second and third; preocular large, as wide as the ocular, in contact with third labial; ocular with but slightly convex anterior edge, in contact with third and fourth supralabials; supraoculars, prefrontal, frontal, postoculars, and parietals scale like, subequal; eye distinctly visible; 20 scale rows round the body; about 3 in scales on the middle line of the body underneath from chin to vent and 11 under the tail; tail ending in a spine. Color above brown, each scale being dark brown on the terminal two-thirds, the base being abruptly pale; on the smaller head scales this color pattern does not exactly correspond to the individual scales, and the large head shields are brown, with pale edges; underside whitish, the dividing line between the color of the upper and lower surfaces being very irregular, with an angular projection of the white color into the brown on the side at the level of the vent.

Dimensions.

mm.

Tip of snout to vent 278

Vent to tip of tail 6

Diameter of body 9

Variation. — The individual variation in scutellation and color is but slight. The number of scale rows in six specimens from Porto Rico and Mona is 20; in 2 (U.S.N.M. Nos. 29198 and 30908) it is 22. The color of one of the specimens from Mona Island in the Hamburg Museum (No. 1582), examined by me in August, 1901, was nearly uniform whitish, having the appearance of an albino.

Habitat. — The true *Typhlops htinbricalis* extends from South America into nearly all the Antillean islands. Thus, it is recorded from Martinique, Guadeloupe, Dominica, St. Kitts, Antigua, the Virgin Islands, Porto Rico, Mona, Haiti, Cuba, and Jamaica.

In Porto Rico it has thus far been found only in the low land, not far above sea level. There are two specimens in the Hamburg Museum from Mona Island, collected by Mr. Bock in 1891 and 1894,

143 144

Figs. 141-144.— *Typhlops lumbricalis*.

3j x natural size. 141, top of head; 142,
side of head; 143, underside of head; 144,
anal region and underside of tail.

No. 27489, U.S.N.M.

[Begin Page: Page 686]

686

REPORT OF NATIONAL MUSEUM, 1902.

List of specimens of *Typhlops lumbricalis*.

U.S.

N.M.

No.

25779

27324

27-489

29198

29364

3090S

Sex and
age.

Young. .

Locality.

Bayamon, Porto

Rico.

do

Aguadilla, Porto

Rico.

Mayaguez, Porto

Rico.

do

Bayamon, Porto

Rico.

When col-
lected.

Jan. 15,1899

July 28,1900

-, 1901

Sept. 16, 1901

Jan. 14,1899

By whom collected.

A. B. Baker.

A. Stahl

B. S. Bowdish.

.do.

do

Augustus Busck.

Scale.

20

20

20

22

20

22

Remarks.

Specimen figs.

141-144, and described, p. 684.

TYPHLOPS ROSTELLATUS/* new species.

Diagnosis. — Snout rounded; nostrils lateral; preocular in contact with third labial only; nasal completely divided in two; two postoculars; rostral very narrow, one-fifth to one-sixth the width of the head; 18-20 scale row T s.

Type.— U.S. N.M. No. 25463; Lares, Porto Rico; A. B. Baker, collector.

Habitat. — Porto Rico, West Indies.

Description <>f type specimen. — Adult; U.S. N.M. No. 25463; Lares;

January 26, 1899. Head blunt, not depressed, snout projecting, rounded laterally; nostrils lateral; rostral narrow, about one-sixth the width of the head (1:6.1), not extending as far back as a line between the anterior edge of the eyes; nostril on a suture completely dividing the nasal, the lower anterior part in contact with first and second, the upper posterior nasal in contact with second and third; preocular wider than ocular, its anterior angle much produced and rather acute, in contact with third supralabial only; ocular with the anterior border strongly convex, in contact with third and fourth supralabials; supralabials four, the posterior two large and reaching high up on the side; prefrontal, frontal, and interparietal scale-like, subequal; supraoculars and parietals enlarged, especially the latter; eye distinctly visible; 18 scale rows round the body; about 333 scales on the middle line of the body underneath from chin to vent, and 13 under tail; tail ending in a spine. Color uniform dark brown, slightly paler underneath; through the dark ground color a distinct blackish network can

146

145 147

Figs. 14-5-147.— *Typhlops rostellatus*. 3£ x natural size. 145, top of head; 146, side of

head; 147, underside of head.

« With reference to the narrowness of the rostral shield.

[Begin Page: Page 687]

HEEPETOLOGY OF PORTO RICO.

687

be traced, the meshes of which anteriorly coincide with the outline of the scales, but becoming more and more discordant posteriorly } 7 ; rostral and anterior nasal brown above, margined with whitish, underneath whitish; a very abrupt whitish spot occupying the anal region and the under side of the tail.

Dimensions.

mm.

Tip of snout to vent 197

Vent to tip of tail 3

Diameter of body 5

Variation. — The individual variation appears to be similar in char-

acter and extent to that indicated for *Typhlops lumbricalis*. Three of our specimens have 18 scale rows, the fourth has 20.

Habitat. — Thus far the only definite locality whence we have received this species is Lares, in the western part of Porto Rico. In this place Mr. A. B. Baker obtained three specimens. A fourth was sent from Porto Rico by Mr. Charles E. Adams, but without indication of the exact locality where he collected it.

Remarks. — This interesting novelty resembles in color closely the specimens which Boulenger has described from Dominica under the name of *Typhlops platycephalus*. The latter differ, however, by having 20 scale rows around the body and a much wider rostral which is said to be one-third the width of the head. Dumeril and Bibron's *Typhlops platycephalus*, which is said to have come from Martinique, collected by Plee, must be a very different one from the Dominica species. It is described as having 20 scale rows and it might consequently be suspected to be the same as our Porto Rican species, but apart from the radically different coloration, the true *T. platycephalus* is described as having the head more depressed than *T. lumbricalis* and the posterior supralabials much lower, while, as we have seen, two of the best characters of our new *T. rostellatus* are the lack of depression in the profile of the head and the unusual height of the posterior supralabials.

Boulenger's *T. platycephalus* is apparently different from that of Dumeril and Bibron and may be appropriately named *Typhlops dominicana*, from the island of Dominica, of which it is a native.

TAst of specimens of *Typhlops rostellatus*.

« Cat. Sn. Brit. Mus., I, 1893, p. 30.